



LOUNGE, LIBRARY and hobby shop were built by crew of USS Chourea (ARV 1) with salvage material and \$80 from welfare and recreation fund.

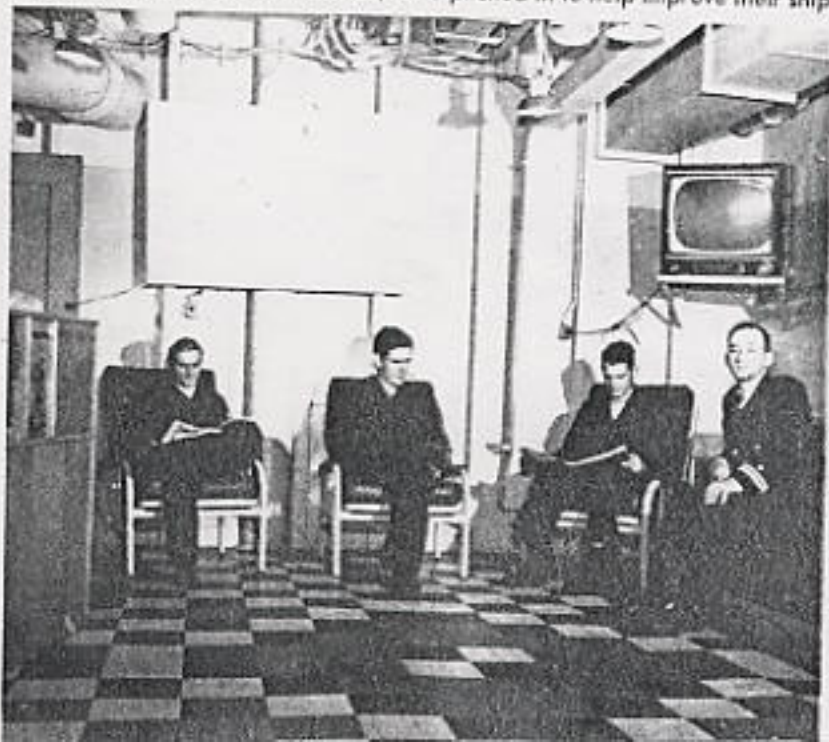
accomplished — habitability project is the installation in living compartments of mirrors with a light over them and plug-ins for users of electric shavers. Such outlets make shaving possible when washrooms are secured, cut down on the amount of toilet gear to be lugged back and forth between the washroom and your compartment, and decrease traffic in washrooms jammed by liberty bounds.

Have you ever found it next to impossible to get whites or blues pressed aboard ship, or tried to borrow an iron and find a place to use it? *Hab-*

Hints has your answer: Installation throughout the berthing spaces of one steam or dry iron and ironing board for each 50 men in the crew. The ship's force can easily turn out the clips needed to hold the boards to the bulkhead while not in use and the sheet metal boxes for stowing the irons. While only electric irons are listed in standard stock, both irons and boards may be procured commercially.

Hab-Hints also tells you how to alleviate the twin nuisances of laundry bags and present types of peacoat lockers. One of the new peacoat

DO-IT-YOURSELF — Many crews, like men of USS YV-2 shown here in room they gave themselves for Christmas, have pitched in to help improve their ship.



lockers looks like a larger version of the present cleaning gear locker. It is built to hold eight coats in each of its two tiers. Or a wardrobe locker may be built large enough to suit your needs. The smaller type into blind passages between berths. The wardrobe type may be built in any available corner or with the help of any open bulkhead space.

Lockers to replace the present satisfactory canvas laundry bags are recommended for the space in lockers, but they may be installed wherever you have space for them.

In case you don't like the present lighting in your compartment, fluorescent fixtures are available, or you can get from standard stock light baffles designed to fit all metal in-watt overhead fixtures. These baffles control the distribution of light, eliminating glare and dark overheads.

So you fancy up your compartment with better lighting, a color-paint job and sparkling new deck covering. There are no more laundry bags to be scrubbed every week — what about that old sack itself? Well, that too can be more habitable.

For instance, foam rubber mattresses in standard sizes for Navy-type bunks are available for crew quarters, as well as CPO and officer quarters. They're softer, easier to clean and sterilize, help you to make a better-looking bunk — and compartment — for inspections, and are much more comfortable to sleep on. If you don't believe it, just ask the men of USS *Robert F. Keller* (DE 419) who've been doing their dreams on foam rubber for some months now. LTJG D. F. Kiechel, USN, who's gunnery officer on this DE, points out that some of the guys, of course, don't like the new mattresses, just as some of them gripe about the pastel paint and curtains, but "you can't please everybody."

Included in the habitability benefits is a berth front stanchion and hand rail, designed to replace the hand chains now in use — and brother, you've ever tried to find enough chains of the same length to make a tier of bunks hang evenly, you know how much this can add to your comfort. They also eliminate noise, and make it easy to raise an entire tier of bunks at one time for sweeping and swabbing, or clearing a passage for the movement of bulk supplies.

Via submission of a "shipalt" before your ship has her next voyage period, you can have metal berth